

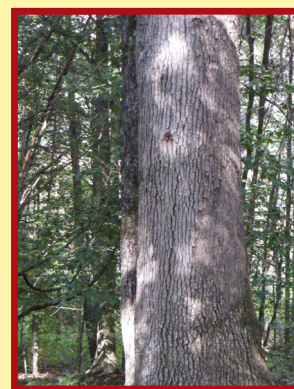
AUCTION

**SATURDAY,
OCTOBER 22, 2011
10:00 A.M.**

TIMBER

- **HOUSE AND 59.88 ACRE FARM**
- **TIMBER**
- **ANTIQUES**
- **COLLECTIBLES**
- **PERSONAL PROPERTY**

DIRECTIONS: From Tompkinsville, take Gamaliel Rd. (Hwy. 100/63 S) 1 mile, turn right onto Hwy. 1366 (County House Rd.) and go 9.4 miles, turn right onto Fountain Run Rd. (Hwy 100) and go approximately 2 miles to sale site. From Fountain Run, take Fountain Run Rd. (Hwy 100 E) approximately 2 miles to 10872 Fountain Run Rd. to sale site. **SIGNS POSTED.**



DESCRIPTION OF REAL ESTATE: This farm consists of 59.88 acres according to a new survey and has approximately 23 acres in crop and pastureland and the remainder in timberland. This farm offers good road frontage on Hwy 100 with county water and other water sources. Located on this farm is a two-story aluminum siding house w/shingle roof and new replacement windows. The home has a living room, kitchen/dining room, 2 bedrooms, 1 full bath, 2 rooms upstairs, and an enclosed porch.

TIMBER: Mr. Timber Buyer, you should take a look at this boundary of timber. This farm offers a real nice boundary of mature timber that has not been cut in over 50 yrs. The species consists of red oak, white oak, some walnut, poplar, maple, hickory, and other species. Terms: If the timber sells separate from farm, you will have one year to cut and remove the timber from the property with a clear cut. You will be required to sign a timber contract on the day of sale. More terms and conditions concerning the timber will be announced on the day of the sale. For more information, contact the selling agent.

SALE ORDER: We will sell personal property until 11:00 a.m. At that time we will sell the farm, then sell the timber, and combine the farm with the timber upon request with best sale adopted.

ANTIQUES & COLLECTIBLES: Gentlemen's oak dresser; oak chest of drawers; oak table; chest of drawers; oak washstand; oak smoke stand w/pipe drawer; oak dresser; oak stool; old bed; oak buffet; oak Hoosier cabinets; white Hoosier cabinet; oak school desk; oak child's desk; treddle sewing machine; old display case; rocking chair frame; dresser; high chair; 3/4 bed;

old oak beds; medicine jug "Gilliam Drug Store"; '70's & '80's Hotrod Magazines; cast iron skillet (Wagner, Erie); cast iron dinner bell, kettle, & well pump; old books (Huck Finn, Little Men, Modern Arithmetic, Wild Bill Hickok); several old quilts, afghans; lamps; child's rocking chair; clear & brown glass jugs; oil lamps; coffee grinder; sausage grinder; old green glass vaporizer; baskets; crock; blue jars; picture frames; depression glassware (platters, bowls, lids, dishes); pitchers; covered dishes; candy jars; several sets of glasses; stemmed glasses; Fostoria glasses; pink stemmed glasses; covered dishes; Thumb print glasses; old green vase; ice cream soda glasses; old Sun Drop cola bottles; sugar, creamer, platter; old corn sheller; wooden boxes, and many other items.

PERSONAL PROPERTY: Couch & chair (like new); several odd chairs; recliner; swivel rocker; coffee table; end table; Sanyo color TV; 2 white cabinets; 2-door metal cabinet; GE upright freezer; Panasonic microwave; microwave stand; several stools; Samsung 20" TV; square table; Tappan stove; Amana washer; Hotpoint refrigerator; college books; throw rugs; set of "Colorstone" dishes; set of "Totally Today" china; set of knives; canisters; porch furniture; pictures; pots & pans; metal pans; Tupperware; books; pillows; footstool; lamps; toaster; crock pot; towel racks; coffee pot; vacuum cleaners; cooler; kid's desk; McDonalds Soda Fountain; heater; hand sprayer; 4-prong cane & walker; suitcase; jars; ironing board; plasticware; baskets; sets of glasses; silverware; bed linens (bedspreads, sheets, throws, afghans, pillows, blankets); bath linens; kitchen linens; flower arrangements; and many other items.

TAXES: Taxes for 2011 will be paid by the seller.

AGENT'S NOTES: Proffitt Real Estate Agency, Inc is honored to have the opportunity to sell the David and Cletra Mae Yokley Estate. This farm lays in a very nice community of Monroe County, on the main highway leading from Tompkinsville and Gamaliel to Fountain Run, KY. This farm features some of the best timber that you can find left in this county. This auction also features some really nice antiques, collectibles, and personal property. Make your plans to be with us on Saturday, October 22 at 10:00 a.m. for a fun day at an auction.

TERMS: Real Estate - A 15% non-refundable deposit will be required to be paid on the day of the sale, with the balance due on or before 30 days. Full possession will be given with deed. **Timber** - If the timber sells separate from the farm, the timber will be paid in full on the day of the sale with full possession on the day of the sale. **Personal Property** - Cash or approved check on day of sale with proper I.D. All items are being sold "As Is, Where Is" both surface and subsurface. This property will be selling with a new survey.

**Lunch will be served.
Restrooms available.**

DAVID AND CLETRA MAE YOKLEY ESTATE - OWNERS



TOMPKINSVILLE, KY

**Phones: 270-487-6104
270-487-6929
1-800-492-2681**

**Visit our Website at:
www.proffittrealestate.com**

LEAD BASED PAINT: This home was built before 1978 and lead based paint could be present. Make your inspections on or before sale day and be prepared to sign a Lead-Based Paint Waiver prior to signing a sales contract.

Any announcements made day of sale takes precedence over all other advertisements or comments. Proffitt Real Estate Agency, Inc., it's employees, and sellers are not responsible for any accidents. All information contained in our advertisements has been obtained from sources deemed to be reliable. Seller and/or selling agents of Proffitt Real Estate Agency, Inc and their employees cannot and do not guarantee it's accuracy.

SHARON B. PROFFITT - PRINCIPAL BROKER & AUCTIONEER - LICENSED REAL PROPERTY APPRAISER (KY & TN)
EDDIE PROFFITT - SALES ASSOCIATE & AUCTIONEER - PH. 487-8193 • WILLIAM H. PROFFITT - SALES ASSOCIATE & AUCTIONEER
BOB PROFFITT - AFFILIATE BROKER (TN) • JIMMIE THOMPSON - SALES ASSOCIATE - PH. 487-6558
LESLEY PAGE - SALES ASSOCIATE - PH. 407-9800 • DUANE BROWNING - SALES ASSOCIATE/AUCTIONEER/AFFILIATE BROKER (TN/KY) - PH 615-572-0116



**"Profit
with
Proffitt"**